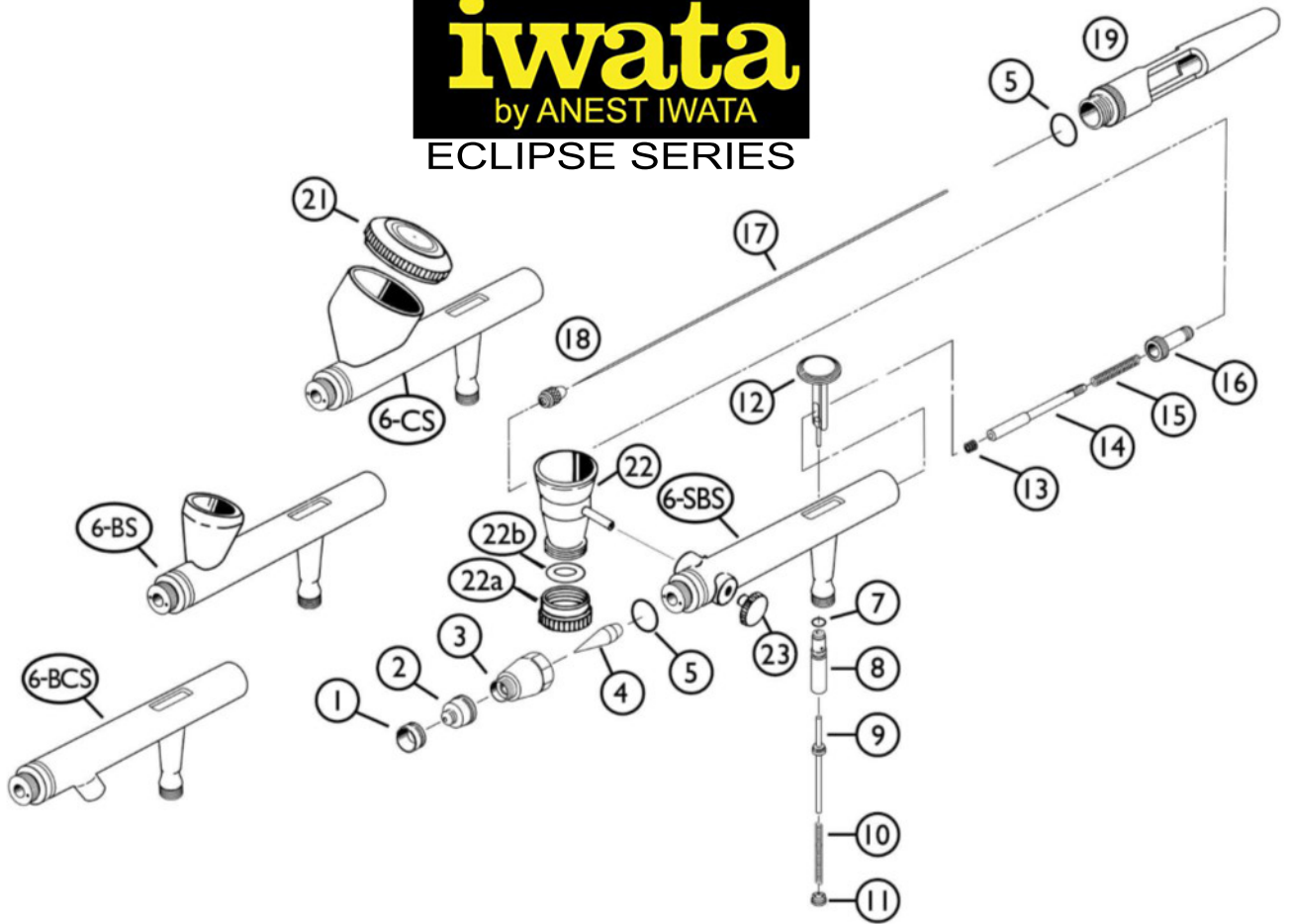


# iwata

by ANEST IWATA

## ECLIPSE SERIES



#	ITEM DESCRIPTION	ITEM #	HP BCS	HP BS	HP CS	HP SBS	ALSO FITS
1	Needle Cap	4109	■	■	■	■	
2	Nozzle Cap E5	4110	■	x	x	x	
		4149	x	■	■	■	
3	Head Cap	4111	■	■	■	■	
4	Nozzle  E5	4112	■	opt	opt	opt	
		4134	opt	■	■	■	
5	Packing Head O-Ring	4113	■	■	■	■	
6	Body*	N/A	■	x	x	x	
		N/A	x	x	■	x	
		N/A	x	■	x	x	
		N/A	x	x	x	■	
7	Packing-Valve Piston O-Ring	4115	■	■	■	■	ICM-B
8	Air Valve Guide Body	4116	■	■	■	■	
9	Air Valve	4117	■	■	■	■	
10	Air Valve Spring	4160	x	■	■	■	ICM-B
11	Air Valve Guide Screw	4118	■	■	■	■	
12	Main Lever (Trigger)	4119	■	■	■	■	
13	Needle Chucking Set (PTFE)	A17251	■	■	■	■	HP-BC, BC2
14	Needle Chucking Guide	A17151	■	■	■	■	
15	Needle Spring	4045	■	x	x	x	HP-A
		4071	x	■	■	■	
16	Spring Guide	4088	■	■	■	■	HP-C
17	Needle E5	4120	■	opt	opt	opt	
		4135	opt	■	■	■	
18	Needle Chucking Nut	4027	■	■	■	■	HP-C

#	ITEM DESCRIPTION	ITEM #	HP BCS	HP BS	HP CS	HP SBS	ALSO FITS
19	Single Cut Handle	4121	■	■	■	■	
	Pre-Set Handle	4105	opt	opt	opt	opt	HP-C
	Crown Cap	4023	opt	opt	opt	opt	HP-C
	Bottles 2 oz (See Price List for Other Sizes)	4203	■	x	x	x	BC/BC2
21	Lid						
	Eclipse CS	4138	x	x	■	x	
	Side Cup 1/4 oz	4069	x	x	x	opt	HP-SB
	Gravity Cup 1/3 oz	4067	x	x	opt	opt	HP-SB
	Gravity Cup 1/2 oz	4067	x	x	x	opt	HP-SB
22	Fluid Cup						
	Side Cup 1/8 oz	4223	x	x	x	■	HP-SB
	Side Cup w/Lid 1/4 oz	4156	x	x	x	opt	HP-SB
	Gravity Cup w/Lid 1/2 oz	4228	x	x	x	opt	HP-SB
22a	Lower Lid 1/8, 1/4 oz	4066	x	x	x	■	HP-SB
22b	Packing Lower Lid	4068	x	x	x	■	HP-SB
23	Blanking Cover	4185	x	x	x	■	HP-SB
	Quick Fit Set (Quick Disconnect that Screws Onto the Air Hose and an Adaptor that Screws Onto the Airbrush)	4275	opt	opt	opt	opt	
	Quick Fit Adaptor (Adaptor that Screws onto the Airbrush)	4275-2	opt	opt	opt	opt	



**CALIFORNIA PROP 65 WARNING:** Certain products identified with this symbol and offered for sale in this catalog contain lead, a chemical known to the State of California to cause cancer, birth defects and other reproductive harm.

■ = yes X = no opt = optional  
\*Replacement parts not available.