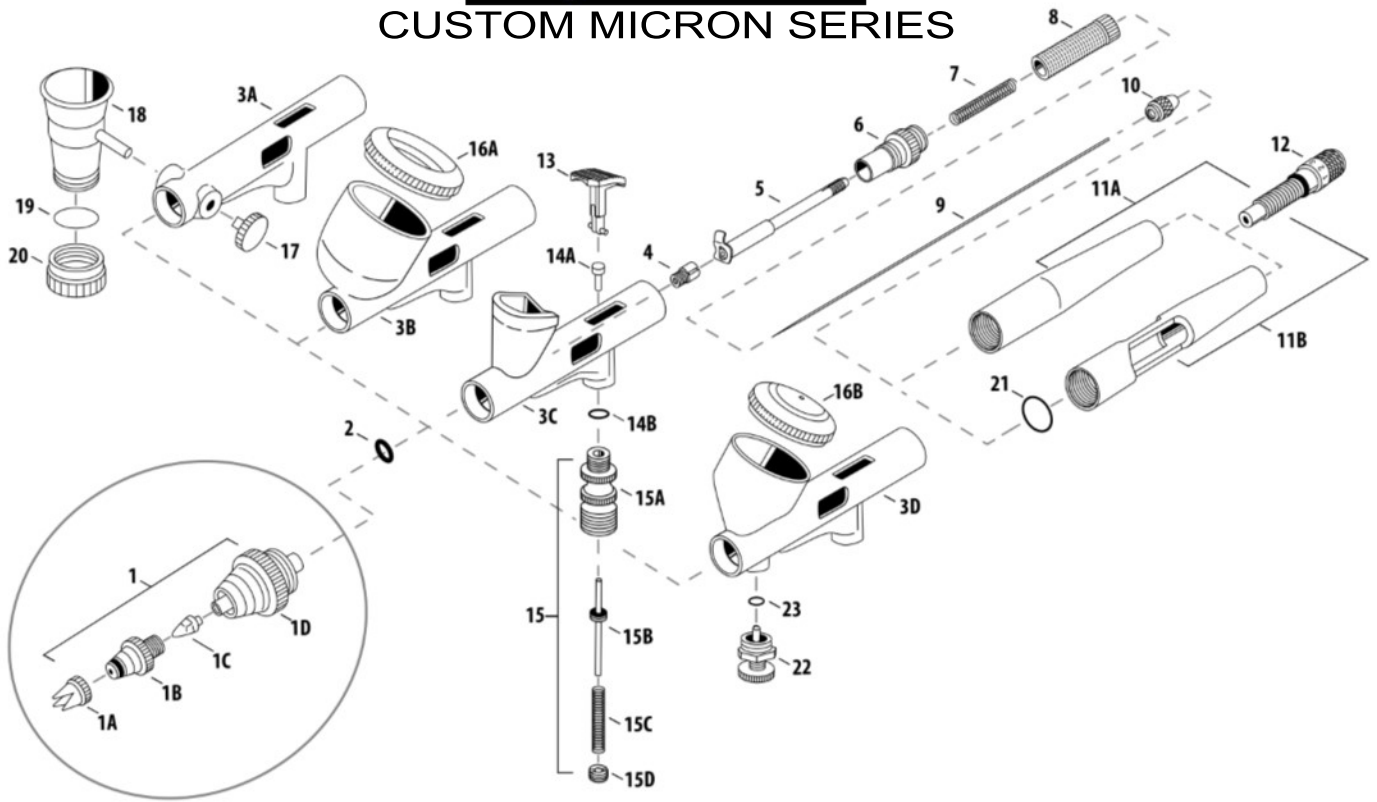


iwata

by ANEST IWATA

CUSTOM MICRON SERIES



#	ITEM DESCRIPTION	ITEM #	CM-B	CM-SB	CM-C	CM-C+	
1	Head System	C1	4057	■	■	x	x
		C2	4148	x	x	■	■
1A	Head Needle Crown Cap	AI535-1D	■	■	■	■	
1B	Head Nozzle Cap	C1	AI535-1C	■	■	x	x
		C2	AI535-2C	x	x	■	■
1C	Head Nozzle	C1	4155	■	■	x	x
		C2	4136	x	x	■	■
1D	Head Nozzle Base	AI535-1A	■	■	■	■	
2	Head Packing	4141	■	■	■	■	
3A	CM-SB Body*	-	x	■	x	x	
3B	CM-C Body*	-	x	x	■	x	
3C	CM-B Body*	-	■	x	x	x	
3D	CM-C Plus Body*	-	x	x	x	■	
4	Needle Packing Screw (PTFE)	AI5902	■	■	■	■	
5	Needle Chucking Guide	AI1157	■	■	■	■	
6	Spring Guide	AI5903	■	■	■	■	
7	Needle Spring	AI5701	■	■	■	■	
8	Needle Spring Adjuster	AI5751	■	■	■	■	
9	Head Needle	C1	AI5404	■	■	x	x
		C2	4137	x	x	■	x
		C2	AI5403	x	x	x	■
10	Needle Chucking Nut	AI5601	■	■	■	■	
11A	Handle (Preset)	I5854	■	■	■	OPT	
11B	Handle (Preset/Single Cut)	I5855	OPT	OPT	OPT	■	
12	Handle Crown Cap Dock (Preset)	I5861	■	■	■	■	

#	ITEM DESCRIPTION	ITEM #	CM-B	CM-SB	CM-C	CM-C+	
13	Main Lever	AI5454	■	■	■	■	
14A	Valve Piston	4167	■	■	■	■	
14B	Valve Piston Packing	4115	■	■	■	■	
15	Air Valve Set	4146	■	■	■	■	
15A	Air Valve Body	-	■	■	■	■	
15B	Air Valve	-	■	■	■	■	
15C	Air Valve Spring	-	■	■	■	■	
15D	Air Valve Guide	-	■	■	■	■	
16A	Cup Lid	0.24 oz AI530-1	x	x	■	OPT	
16B	Cup Lid (Gravity)	0.24 oz 4138	x	x	OPT	■	
17	Blanking Cover	4185	x	■	x	x	
18	Cup (Side)	0.05 oz	4223	x	■	x	x
		0.24 oz	4156	x	■	x	x
19	Cup Packing Lower Lid	4068	x	■	x	x	
20	Cup Lower Lid	0.05 oz	4066	x	■	x	x
		0.24 oz	4069	x	■	x	x
21	Handle O-Ring	4113	x	x	x	■	
22	MAC Valve Set	4296	x	x	x	■	
23	MAC Valve Packing	4297	x	x	x	■	
	Spanner	4103	■	■	■	■	
	Quick Fit Set	4275	OPT	OPT	OPT	OPT	
	Quick Fit Adaptor (Brush)	4275-2	OPT	OPT	OPT	OPT	
	Air Hose Adaptor (Paasche)	4046	OPT	OPT	OPT	OPT	
	Air Hose Adaptor (T & C/Badger)	4033	OPT	OPT	OPT	OPT	

CALIFORNIA PROP 65 WARNING: Certain products identified with this symbol and offered for sale in this catalog contain lead, a chemical known to the State of California to cause cancer, birth defects and other reproductive harm.

■ = yes x = no OPT = optional
*Replacement parts not available.