



*Supernova*  
**NOVA**™  
designed by  
*pininfarina*

**SUPERNOVA**

LS400 / LS400H / WS400 PARTS LIST





## Index

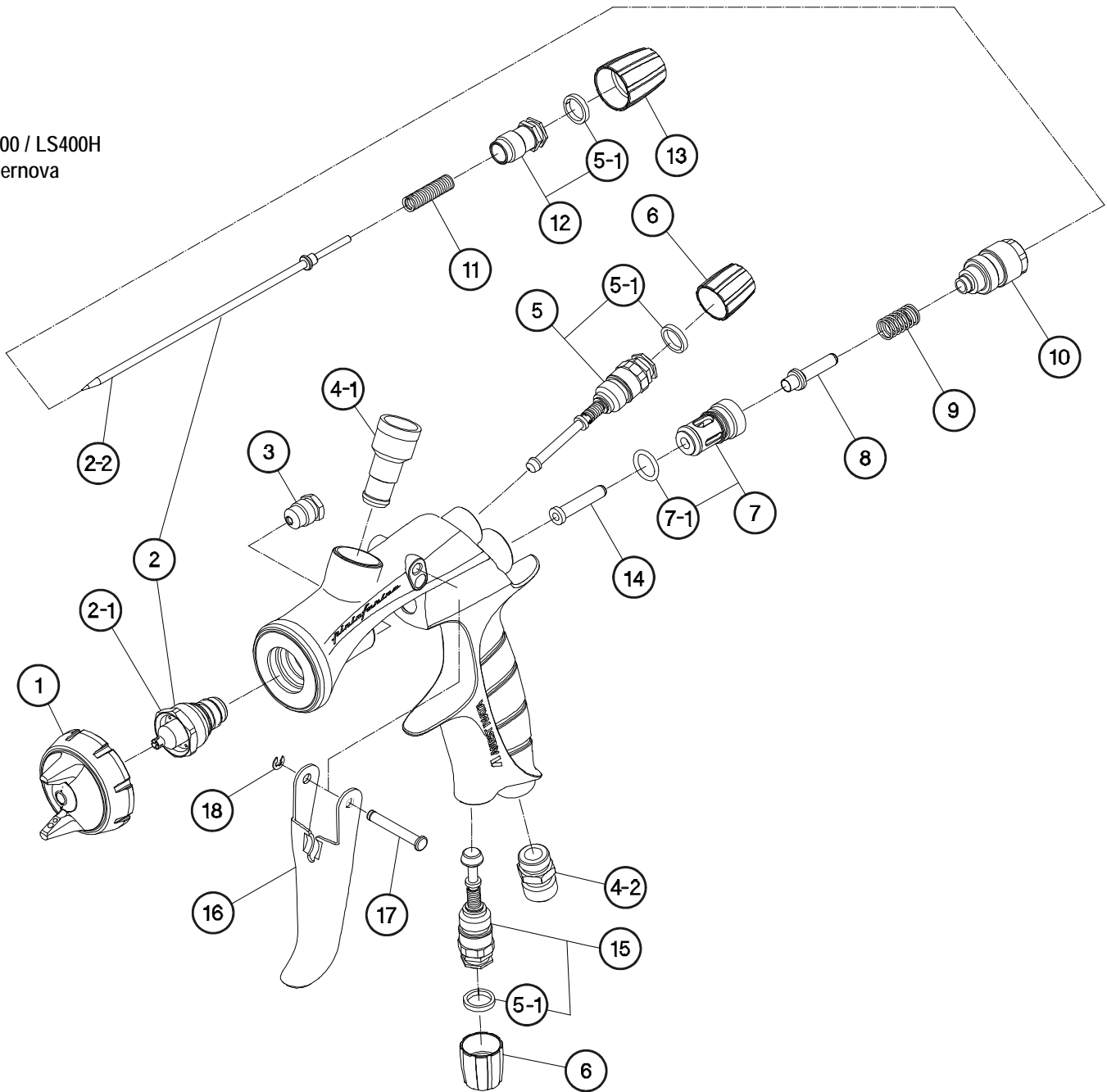
|                           | Page |
|---------------------------|------|
| <b>Spray Guns</b>         |      |
| LS400 / LS400 Hybrid..... | 2    |
| WS400.....                | 4    |



**LS400  
Supernova**

| Ref # | Part #   | Description                   | Remarks                  |
|-------|----------|-------------------------------|--------------------------|
| 1     | 93512300 | AIR CAP ASSY LS-400-01        | BASECOAT                 |
| 1     | 93512320 | AIR CAP ASSY LS-400-02        | CLEARCOAT                |
| 1     | 93512960 | AIR CAP ASSY LS-400-03        | BASECOAT (HYBRID)        |
| 1     | 93512700 | AIR CAP ASSY LS-400-04        | CLEARCOAT (HYBRID)       |
| 2     | 93512340 | NOZZLE/NEEDLE ASSY 1.3        |                          |
| 2     | 93512360 | NOZZLE/NEEDLE ASSY 1.4        |                          |
| 2     | 93512900 | NOZZLE/NEEDLE ASSY 1.3H       | HYBRID                   |
| 2     | 93512910 | NOZZLE/NEEDLE ASSY 1.4H       | HYBRID                   |
| 2-1   | 93512350 | FLUID NOZZLE 1.3              |                          |
| 2-1   | 93512370 | FLUID NOZZLE 1.4              |                          |
| 2-1   | 93512930 | FLUID NOZZLE 1.3H             | HYBRID                   |
| 2-1   | 93512940 | FLUID NOZZLE 1.4H             | HYBRID                   |
| 2-2   | 93830600 | FLUID NEEDLE                  |                          |
| 3     | 93765610 | CARTRIDGE PACKING ASSY        |                          |
| 4-1   | 93505420 | FLUID NIPPLE                  |                          |
| 4-2   | 93660300 | AIR NIPPLE                    |                          |
| 5     | 93505430 | PATTERN ADJUST ASSY           |                          |
| 5-1   | 93505460 | ADJUST RING                   |                          |
| 6     | 93505470 | ADJUST KNOB                   |                          |
| 7     | 93843530 | AIR VALVE SEAT ASSY           |                          |
| 7-1   | 96638008 | O RING                        |                          |
| 8     | 93505480 | AIR VALVE                     |                          |
| 9     | 93719530 | AIR VALVE SPRING              |                          |
| 10    | 93505490 | FLUID ADJUST GUIDE ASSY       |                          |
| 11    | 93593530 | FLUID NEEDLE SPRING           |                          |
| 12    | 93505810 | FLUID ADJUST SCREW ASSY       |                          |
| 13    | 93505830 | FLUID ADJUST KNOB             |                          |
| 14    | 93595530 | AIR VALVE SHAFT               |                          |
| 15    | 93505840 | AIR ADJUST ASSY               |                          |
| 16    | 93505850 | TRIGGER                       |                          |
| 17    | 93505860 | TRIGGER STUD                  |                          |
| 18    | 96612025 | E STOPPER                     |                          |
|       | 93505341 | L GASKET (BLACK)              | FOR AIR CAP SET          |
|       | 93505330 | AIR CAP GASKET (WHITE)        |                          |
|       | 5652     | REPAIR SERVICE KIT            | 3, 5-1, 7, 9, 11, 17, 18 |
|       | 2993     | TEST CAP GAUGE SET "LS400-01" | BASECOAT                 |
|       | 2994     | TEST CAP GAUGE SET "LS400-02" | CLEARCOAT                |
|       | 2976     | TEST CAP GAUGE SET "LS400-03" | BASECOAT (HYBRID)        |
|       | 2977     | TEST CAP GAUGE SET "LS400-04" | CLEARCOAT (HYBRID)       |

LS400 / LS400H  
Supernova





**WS400  
Supernova**

| Ref # | Part #   | Description             | Remarks                  |
|-------|----------|-------------------------|--------------------------|
| 1     | 93505300 | AIR CAP ASSY WS-400-01  |                          |
| 2     | 93506410 | NOZZLE/NEEDLE ASSY 1.3  |                          |
| 2     | 93506420 | NOZZLE/NEELDE ASSY 1.4  |                          |
| 2-1   | 93506440 | FLUID NOZZLE 1.3C       |                          |
| 2-1   | 93506450 | FLUID NOZZLE 1.4        |                          |
| 2-2   | 93830600 | FLUID NEEDLE            |                          |
| 3     | 93765610 | CARTRIDGE PACKING ASSY  |                          |
| 4-1   | 93505420 | FLUID NIPPLE            |                          |
| 4-2   | 93660300 | AIR NIPPLE              |                          |
| 5     | 93505430 | PATTERN ADJUST ASSY     |                          |
| 5-1   | 93505460 | ADJUST RING             |                          |
| 6     | 93505470 | ADJUST KNOB             |                          |
| 7     | 93843530 | AIR VALVE SEAT ASSY     |                          |
| 7-1   | 96638008 | O RING                  |                          |
| 8     | 93505480 | AIR VALVE               |                          |
| 9     | 93719530 | AIR VALVE SPRING        |                          |
| 10    | 93505490 | FLUID ADJUST GUIDE ASSY |                          |
| 11    | 93593530 | FLUID NEEDLE SPRING     |                          |
| 12    | 93505810 | FLUID ADJUST SCREW ASSY |                          |
| 13    | 93505830 | FLUID ADJUST KNOB       |                          |
| 14    | 93595530 | AIR VALVE SHAFT         |                          |
| 15    | 93505840 | AIR ADJUST ASSY         |                          |
| 16    | 93505850 | TRIGGER                 |                          |
| 17    | 93505860 | TRIGGER STUD            |                          |
| 18    | 96612025 | E STOPPER               |                          |
|       | 93505341 | L GASKET (BLACK)        | FOR AIR CAP SET          |
|       | 93505330 | AIR CAP GASKET (WHITE)  |                          |
|       | 5652     | REPAIR SERVICE KIT      | 3, 5-1, 7, 9, 11, 17, 18 |





**ANEST IWATA USA, Inc.**  
9920 Windisch Road, West Chester, OH 45069  
Tel: (513) 755-3100  
Fax: (513) 755-0888  
Toll Free: 1-800-440-0282  
Web: [www.anestiwata.com](http://www.anestiwata.com)  
Email: [inquiry@anestiwata.com](mailto:inquiry@anestiwata.com)

Models and specifications subject to change without notice.

© Copyright 2010, ANEST IWATA USA, Inc.